

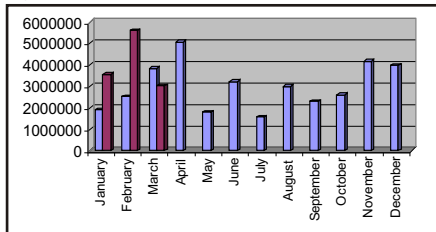
Bulletin

ECR Crime Prevention

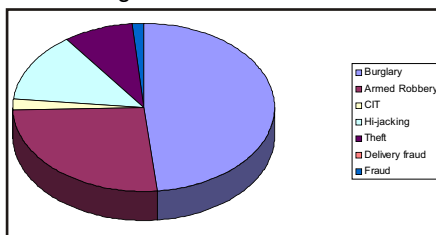
March 2004

Making it Happen

In contrast to February (when we recorded the highest losses since we started tracking them at Industry Level, the total recorded Value of Loss came down in March by some R2.6 million. The graph below shows March against previous months

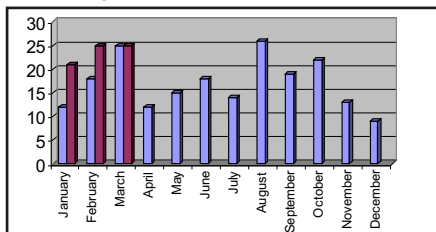


The breakdown between the various incident types is more or less the same as before, with the first quarter's returns giving the following chart:



Burglary

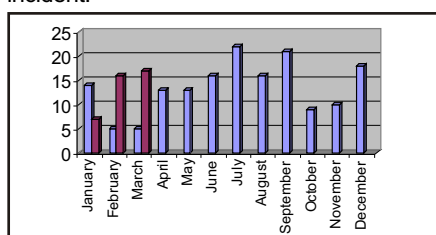
This type of incident consistently has the highest proportion of the Value of Loss, although the figure for March declined by R1.4 million.



Analysis of the data to hand does not show any significant anomalies or trends, apart from the fact that weekends appear to be high risk times (50% of incidents occur between Friday night and Monday morning).

Armed Robberies

Although the first quarter was an improvement on the previous periods, we are not reducing our focus on this class of incident.



The Violent Crime Sub-committee continues to press on. The survey of Shopping centres

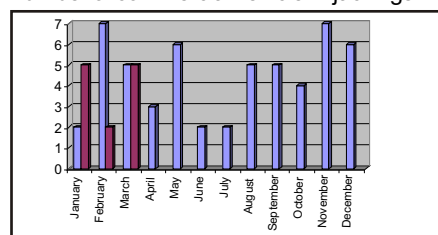
should be completed by mid-April, and the results (a "best Practice" to design out Robberies) should be ready by the end of May. We have had tremendous co-operation from Shopping Centres management in this regard. On March 18th your correspondent was privileged to address the Gauteng chapter of the Shopping Centre Council about the work we are doing. The talk was well received, and a number of enquiries emanated from the discussions that followed, with requests for assistance in securing shopping centres the main area of interest.

Further talks are planned for the rest of the country.

We were invited to address the tenants of Savannah Shopping Centre in Polokwane, focusing on ways to reduce their vulnerability to Armed Robbery, and then what to do in the event an incident still occurs. Over 80 people attended the presentation, including the SAPS Area Commissioner (who opened the meeting) and the Director of the Office of the Limpopo MEC for Safety and Security.

Hi-Jacking

Although the number of incidents does not appear high, the average value of Loss per incident for Hi-jacking is R133, 000 per event, resulting in a loss of almost R600, 000 for March. Logistics SA, the grouping of Distribution and Warehousing companies that service the FMCG industry, is meeting again on May 14th (in Johannesburg), and this topic will be explored in more detail. The SAPS Operation Roadrunner is continuing to play an important role in keeping down the number of commercial vehicle hi-jackings.

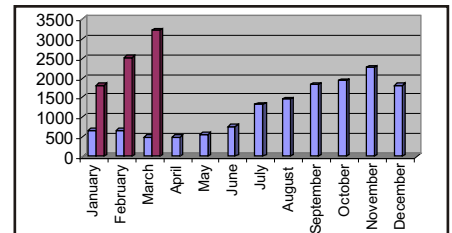


What has also come to light is the fact that a large proportion of hi-jackings are in fact hand-overs, and a further appeal has come from the police to provide us with cell phone number details of all parties involved in the incident (especially the driver and co-driver).

Theft

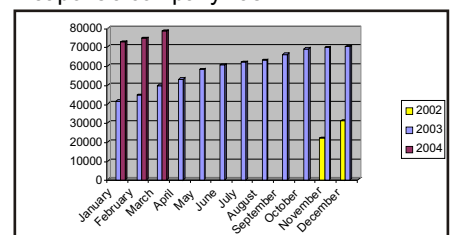
The graph below shows the number of shoplifting and theft by staff (in-house and third party). Please do not read any significance into the growth curve this can be attributed to the growing number of stores reporting these incidents to the Crime Office.

At just over R1 million for the first quarter (with limited reporting coming through), this is obviously a problem that needs to be highlighted and not ignored.



Employers' Reference Site

The number of companies contributing their terminations and enquiring on new employees is still growing, as is the number of names on the database. The proof of the value of this database can be seen in the number of enquiries that are now starting to show more than one employer in the candidate's history. Companies that haven't yet done so are urged to make the ERS enquiry a mandatory part of their employment process, as pre-employment screening has been universally proven to be one of the most effective loss prevention weapons a company has.



SAPS

Our programme of introducing the Crime Prevention Programme to local police structures continued in March, with presentations to the Kwa-Zulu Natal and Eastern Cape Management Forums. The talks were well received in both provinces, with Area-level discussions planned in both. The first meeting of the Kimberley Business Watch (a SAPS initiative aimed at local level co-operation between the police and the private sector) was poorly attended by business. A follow-up meeting has been arranged for April 28th, and interested parties can contact the Kimberley SAPS for details of the meeting.

Business Against Crime

BAC recently appointed a new CEO Kenny Fihla. Under his leadership, BAC has instigated a cross-industry initiative against Crime. Doug Smollan (as Chairman of the Crime Programme) and I were invited to attend the first meeting of this initiative. The invitees represented the motor industry (NAAMSA), insurance (SAIA), banking (SABRIC and SAFPS). Further meetings are planned to look at ways of enhancing co-operation/collaboration as a means of reducing crime in all industries.

April

Last year April was the worst month of the year. Here's hoping that this year it will be the lowest month of the year!